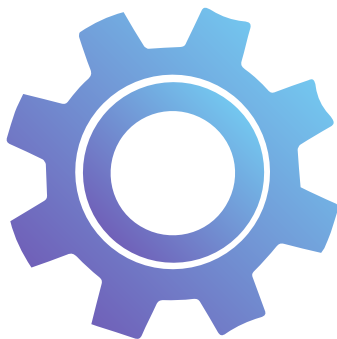


# Atlam

Crafted for your last  
first date and beyond



# Introduction and vision



Atlam is not just a simple dating app but a comprehensive AI powered relationship management platform that aims to revolutionize the way people find and maintain meaningful relationships.

Unlike traditional dating apps that focus solely on matchmaking, Atlam provides tools and features designed to help couples navigate and enhance their relationships over time.

We are the **first** and **only** services on the **whole market** who developed a fully equipped app which not just a dating app, but also a relationship management service. With that we can support and serve the users after stepping into a relationship as well and basically keeping them on our platform and community for a long term.

If you're single, our compatibility checker and other AI powered tools and services will guide you toward the best match. But if you join the app as a couple, our relationship management tools will help you to take your bond to the next level powered by our Ai Coach. As a result we do not only help people to find the right person, but we also offer long-term support with our AI powered relationship management features.

Our Cyprus-registered company, **TPGCS Atlam Technologies Ltd**, started operating **2 years ago**. The product has been present on the **Hungarian** market for **more than 1 year** and has also started operating on the **US market**.

Our vision and plan is to connect our AI powered dating platform with our freshly created Atlam token. We will give governance rights to our token holders and moreover they will instantly get premium services and other benefits on our dating platform.

Furthermore our company and application platform can strengthen the token and vica versa.

In addition we will develop a VIP application exclusively for specific token holders (Tier 8 and 9) in order to give the power and comfort to take place into strategic planning and future decision making processes.



# The Problem



## Not the right partner

The majority of dating sites recommend partners based on appearances, so users develop inappropriate relationships in the long term.



## User retention

The fundamental problem with dating services is that they cannot retain users in the long term.



## A difficult initiative

It is difficult for the majority of users to find the methodology that can lead to a sure success in the getting-to-know-you process.

# Our solution



## Smart Dating

Developed in collaboration with psychologists and relationship experts, measures compatibility based on users shared visions and core values.



## Relationship management

We are the world's first service that not only helps you meet the right people but also helps you maintain your relationship with power of AI.



## Playful engagement

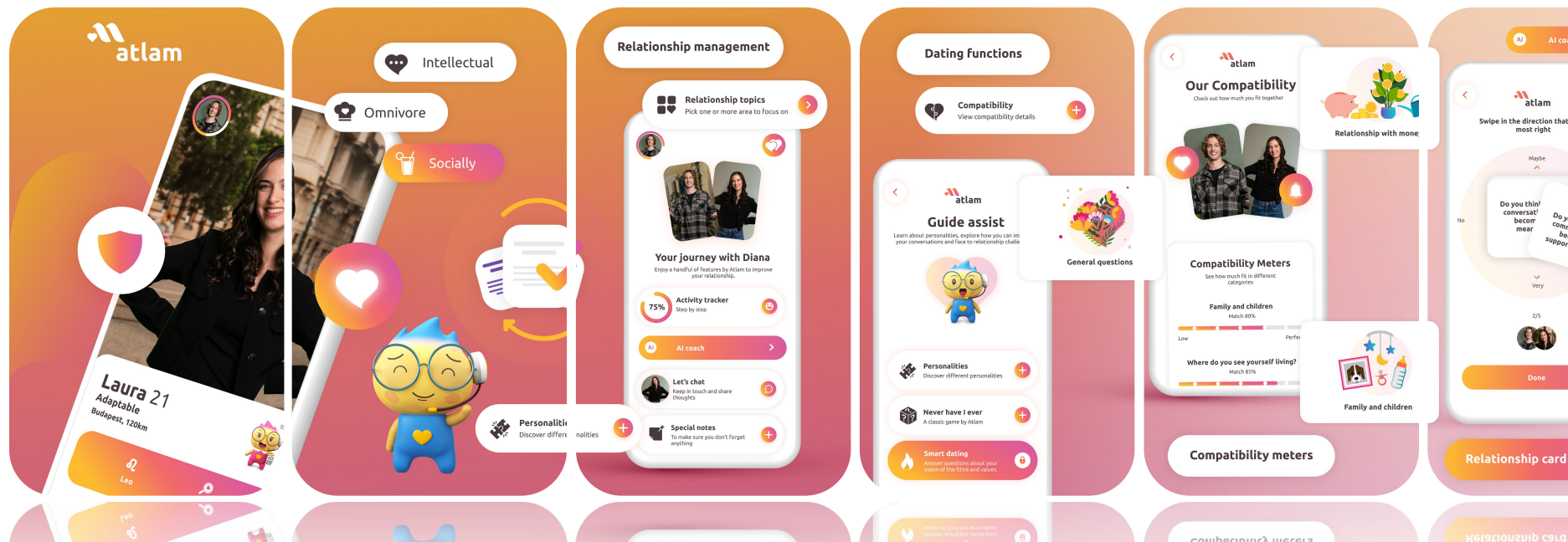
Our interactive prompts not only break the ice but also allow users to add personalized responses to their profiles. Making interactions more enjoyable and meaningful right from the start powered by AI.



# Dating + Relationship management = Atlam

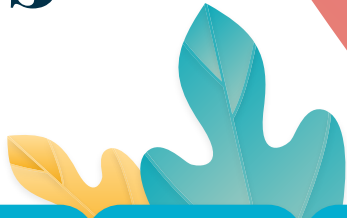
Android and iOS

Developed in collaboration with psychologists and relationship experts.



# Competitors

Unlike its competitors, Atlam provides matchmakers with a nicer, more transparent user interface, and profiles are constantly verified. Thanks to Smart Dating, compatibility measurement is much more detailed and accurate than competing dating apps.



Service Features	Hinge	Tinder	Bumble	OkCupid	Boo	Atlam
Compatibility				✓	✓	✓
Personality type		✓			✓	✓
Playful dating	✓					✓
Perfect match function						✓
Verified profiles	✓	✓	✓			✓
Relationship management						✓

# Advantages



## Compatibility ✓

A test consisting of 66 questions selected by a psychologist based on 10 cardinal aspects, with which we can assess a user's vision of the future and values also how they are see a world.

## AI wingman ✓

Ai Wingman is a help tool for starting conversations. It helps the user make specific openers based on the partner's profile.

## Perfect match ✓

Every week, we recommend 2 people to the user who are at least 80-85% compatible based on the Smart Dating questions.

## Relationship management with AI ✓

We introduce an idea in the dating market which can help reduce the churn rate which is a huge problem for the dating apps.

## Advanced filter ✓

20 filter options. Compared to competing dating sites, we offer users more important and detailed filtering criteria.

## Easy dating ✓

To start a conversation, a true-false game, topic ideas given based on interests, and the possibility of answering a unique question.

# Atlam Token

With the integration of blockchain technology, **Atlam** introduces its own Solana-based token, which serves as the cornerstone of the ecosystem. The Atlam token grants users access to premium features, fosters community participation, and introduces a governance model where token holders have direct influence over the platform's evolution.

## The Token and Ecosystem

Unlike conventional in-app currencies that serve a single-purpose, the Atlam token has multiple use cases that extend beyond simple transactions. The token is positioned to become a powerful tool for users, enabling a range of functionalities from premium feature access to community governance.

We plan to have a 2% of development found for diverse development purposes.  
Furthermore 1% will be kept for organizing the entrance into more CEX platforms.  
In addition 5% will go for different marketing activities and services from third party firms.







# Utility and Benefits

Atlam tokens serve multiple functions within the ecosystem, making them a valuable asset for users.

The primary utilities include:

- **Access to Premium Features:** Users can redeem tokens for premium in-app services, including enhanced matchmaking, priority profile visibility, AI-driven relationship coaching, and compatibility assessments tailored to their needs.
- **Governance and Voting Rights:** Token holders can participate in decision-making processes related to the app's development, such as introducing new features, selecting expansion markets, and funding additional software projects.
- **Exclusive Content and Rewards:** Higher-tier users gain early access to new features before they are available to the general public.
- **Staking and Incentives:** Future development plans include a staking mechanism that allows users to earn passive rewards by holding their tokens in the Atlam ecosystem. Stakers will also receive special perks such as VIP matchmaking services and additional governance privileges.



# Atlam token holder TIERS



**Candy**  
Tier 1 -3



**Advanced filter**  
Tier 4 -6



**Premium**  
Tier 7 -9

**We assess the USD value of the tokens held by each token holder to determine their eligibility for receiving the reward.**

**Tier 1:** 21\$ - 38\$ | **Tier 2:** 39\$ - 65\$ | **Tier 3:** 66\$ - 69\$ | **Tier 4:** 70\$ - 79\$ | **Tier 5:** 80\$ - 95\$ | **Tier 6:** 96\$ - 99\$  
**Tier 7:** 100\$ - 109\$ | **Tier 8:** 110\$ - 189\$ | **Tier 9:** 190\$ -

**Candy:** only inside the app used currency which can be spent for purchasing different services

**Advanced filter:** users can have unlimited likes, ads free usage and advanced filtering capabilities.

**Premium package:** users can have unlimited likes, ad free usage and advanced filtering capabilities, perfect match service, unlimited number of answers to other users special question, unlimited number of times to check other users who liked us. Compatibility check based on future plans, worldview, inner value and more...



# Strategic milestones and plans for the future:

## 2025 Q2:

- releasing the AI powered relationship management service in Europe (Hungary)
- creating the Terms of conditions and other necessary legal contracts and documents to the app for the USA market
- sending the app to the apple and google stores validation processes
- having a green light from the apple and google for an official release in the USA stores
- releasing the app in both stores in the USA - **DONE**
- creating the necessary infrastructure in the cloud to be able to serve back-end services for the USA
- the Atlam dating + relationship management platform will be available first in the USA market

## 2025 Q3:

- reaching 5M registered user in the USA market
- continue the development of the VIP governance app for token holders
- stepping into different CEX platforms
- start to develop a smart contract system for the Atlam token

## 2025 Q4:

- reaching 10M registered user in the USA market
- getting ready and releasing of the VIP governance app for token holders
- further development of the smart contract system with the help and wishes of the token holders

## 2026 and later:

- Releasing the app in other European countries, South-America and Asia
- Continues planning of further development together with the token holders



# Founders

Furthermore, a silent partner who is present in the company as an investor.



**CEO**

**Tamás Pethe**

The company's managing director and lead mobile developer.



**CTO**

**Gábor Hetesi**

The company's lead developer.



**CFO**

**Péter Tornyos**

Financial director and backend developer.